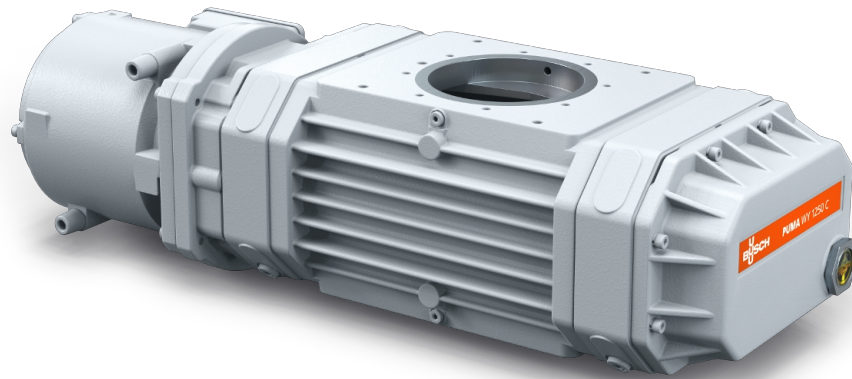


# PUMA WY 0500-1250 C

Vacuum boosters



VACUUM SOLUTIONS



## Reliable

Solid lobe design, robust construction made of GGG40 material, leak-tight, reliable under varying operating conditions

## High performance

Excellent volumetric efficiency, increases the performance of a vacuum system by up to a factor of ten, specially designed for medium and high vacuum including semiconductor applications

## Flexible

Can be flanged directly on the system at any position, boosts the performance of all types of backing pumps

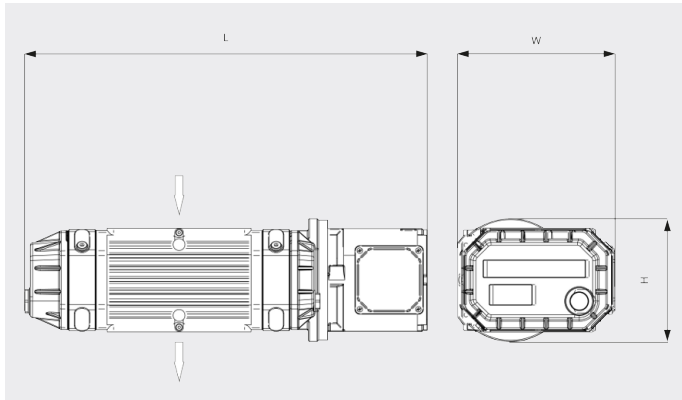
# PUMA WY 0500-1250 C

Vacuum boosters



VACUUM SOLUTIONS

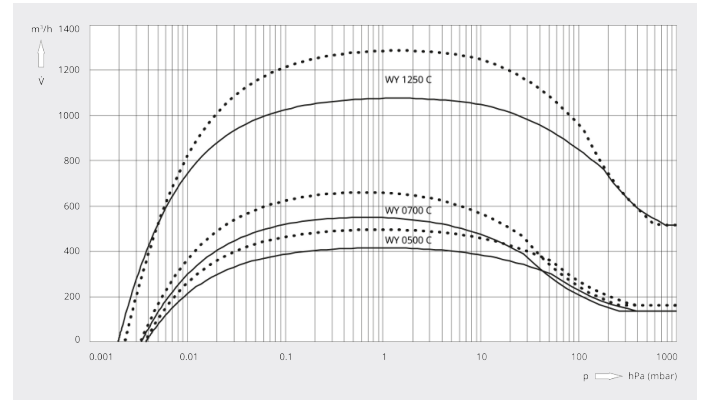
Dimensional drawing



Pumping speed

Air at 20°C. Tolerance: ± 10%

— 50 Hz ..... 60 Hz



	PUMA WY 0500 C	PUMA WY 0700 C	PUMA WY 1250 C
<b>Nominal pumping speed</b>	354 ACFM	495 ACFM	885 ACFM
<b>Pumping speed</b>	271 ACFM	358 ACFM	565 ACFM
<b>Max. differential pressure</b>	40 TORR	40 TORR	40 TORR
<b>Nominal motor rating</b>	3.5 HP	4.8 HP	5.9 HP
<b>Nominal motor speed</b>	3600 RPM	3600 RPM	3600 RPM
<b>Weight approx.</b>	330 Lbs.	365 Lbs.	510 Lbs.
<b>Leakage rate</b>	$< 0.75 \cdot 10^{-7}$ mbar · l/s	$< 0.75 \cdot 10^{-7}$ mbar · l/s	$< 0.75 \cdot 10^{-7}$ mbar · l/s
<b>Dimensions (L x W x H)</b>	26.6 x 12.6 x 10.9 inches	28.6 x 12.8 x 10.6 inches	36.1 x 13.6 x 10.6 inches
<b>Gas inlet / outlet</b>	DN 63 ISO-F / DN 63 ISO-F	DN 100 ISO-F / DN 100 ISO-F	DN 160 ISO-F / DN 160 ISO-F

DO YOU WANT TO KNOW MORE?

Get in touch with us directly!  
[info@buschusa.com](mailto:info@buschusa.com) or +1 757 463 7800



CONTACT FORM



CALL NOW